

MAKING
NEW
TREAT
MENTS
POSSIBLE

WHAT DATA SHOULD BE ACCESSIBLE TO WHOM AND WHEN
BBMRI-ERIC EXPERIENCE

ERIK STEINFELDER

WHO

WE ARE



BBMRI-ERIC is a research infrastructure of biobanks and biomolecular resources that provides expertise and services

in order to facilitate the use of European sample collections and data for the benefit of human health.



BBMRI-ERIC ACCESS POLICY

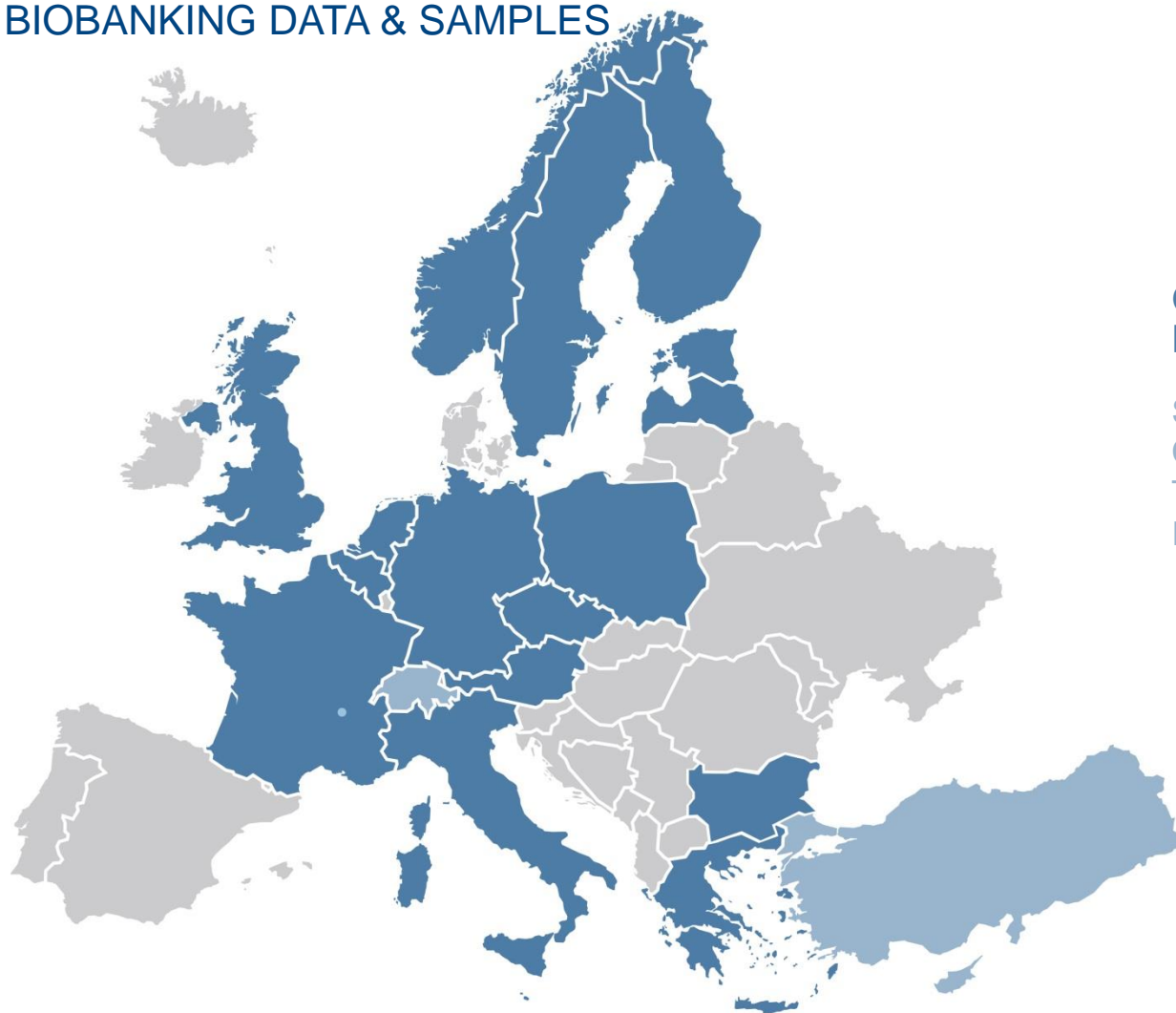
HARMONISING ACCESS TO BIOBANKING DATA & SAMPLES

MEMBERS OF BBMRI-ERIC

Austria
Belgium
Bulgaria
Czech Republic
Estonia
Finland
France
Germany
Greece
Italy
Latvia
Malta
Netherlands
Norway
Poland
Sweden
United Kingdom

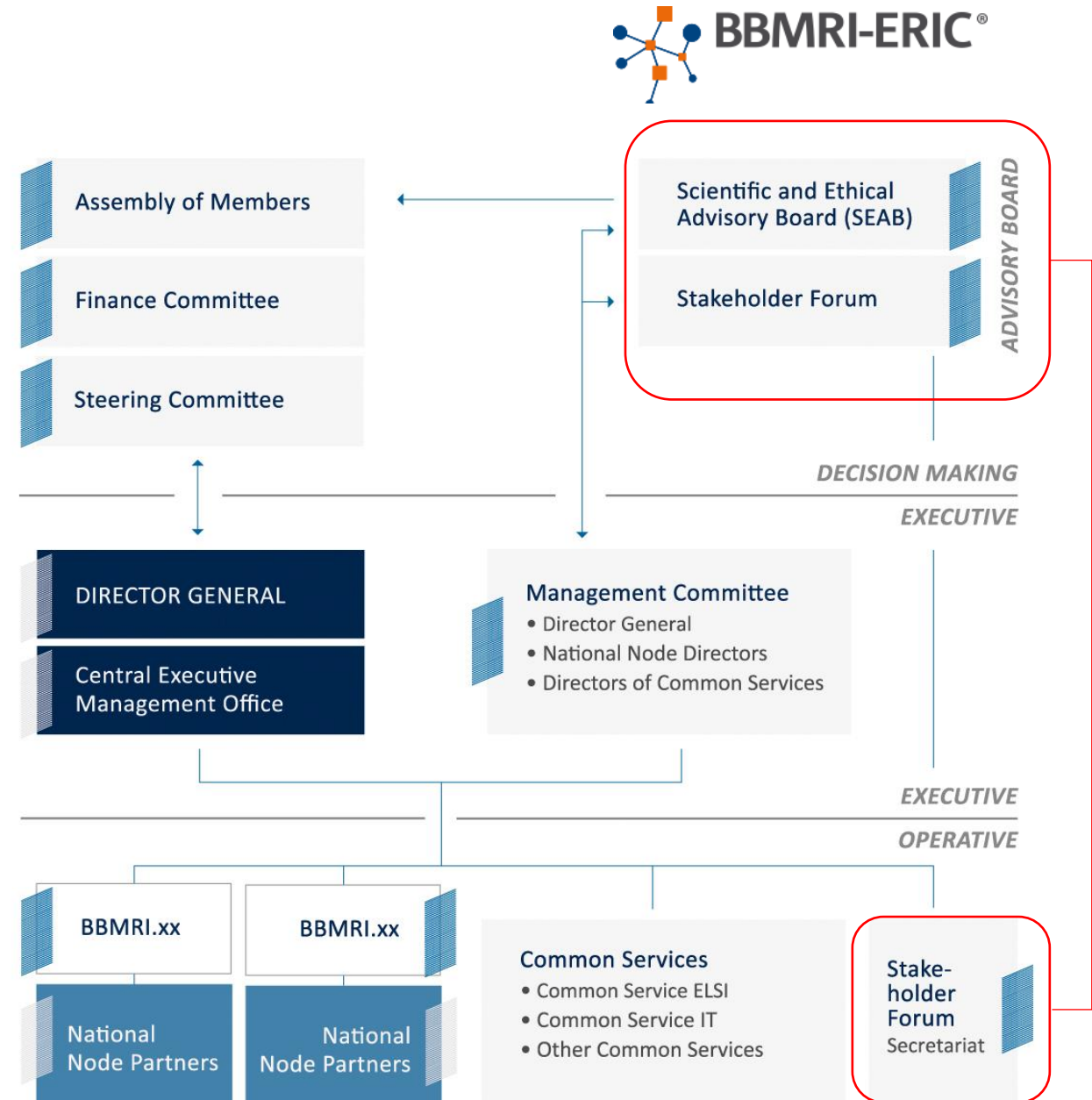
OBSERVERS OF BBMRI-ERIC

Switzerland
Cyprus
Turkey
IARC



BUILDING TRUST

OUR STAKEHOLDER FORUM



SHOULD INDIVIDUAL RESEARCH RESULTS BE RETURNED TO PATIENTS/CITIZENS?

Before the debate

n=64 (single response)



After the debate

n=67 (single response)



GOAL OF THE NEW BBMRI-ERIC STRATEGY

MOVE FROM
RESEARCH-ORIENTED
ORGANISATION TO
SERVICE ORIENTED
ORGANISATION

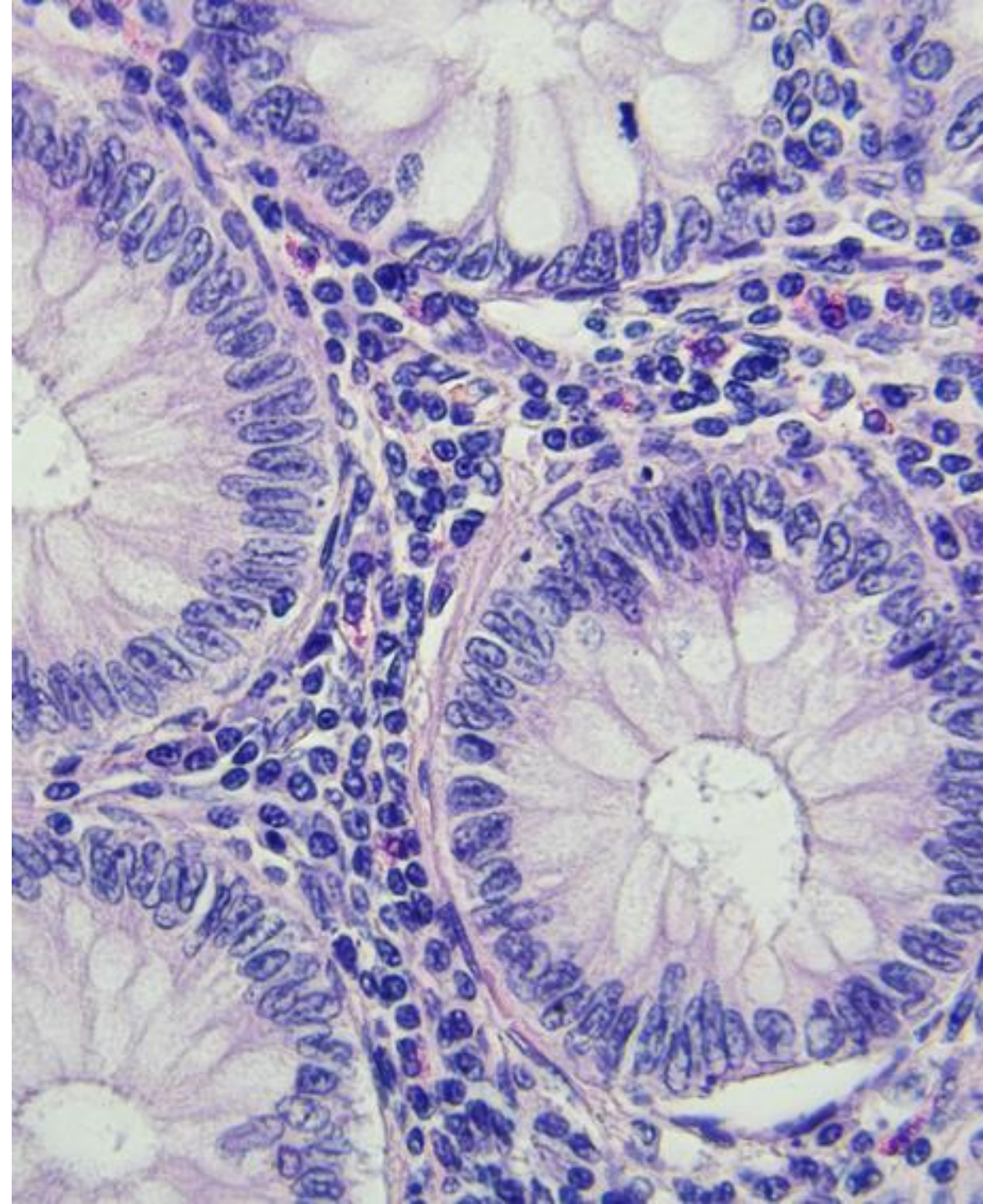


WHAT WE OFFER

**EUROPEAN COLLECTION OF 10,000
COLORECTAL CANCER COHORT
DATASETS SOON AVAILABLE VIA
ADOPT BBMRI-ERIC PROJECT**



This project has received funding from
the European Union's Horizon 2020 research and
innovation programme under grant agreement
No 676550.



IN SUM

- **Our Access Policy** gives a common ground for the organized/harmonized sharing of biobanking data
- **Our Stakeholder Forum** ensures that the BBMRI-ERIC community **keeps building trust** with all the biobanking stakeholders
 - This is crucial to make sure BBMRI-ERIC is not only a provider of data, but helps **bridging science and society expectations**
- **We do not work for academia only**: we need to move from pure research to **SERVICES**, including access to samples and data
- ADOPT CRC as an example

MAKING
NEW **TREAT**
MENTS
POSSIBLE

THANK YOU!

✉ contact@bbmri-eric.eu

🌐 www.bbmri-eric.eu

🐦 [@BBMRIERIC](https://twitter.com/BBMRIERIC)

in [BBMRI-ERIC](https://www.linkedin.com/company/bbmri-eric/)